



Manuel Herraiz
Director, Business Development
CCUS
Siemens Energy

Siemens Energy





In this market environment,

Siemens Energy is a global leader in energy technology

~1/6

of global electricity generation
is based on our technology

103,000

employees work as a team
to energize society¹

>90

We are present in
more than 90 countries

€39.1 bn

in revenue²

¹ Number of employees as of September 30, 2025

² Revenue FY 2025

And we have a strong team driving it

Guiding #TeamPurple in times of uncertainty

Executive Board

Christian Bruch



CEO

Maria Ferraro



CFO

Karim Amin



Gas
Services

Tim Holt



Grid
Technologies

Anne-Laure
de Chamnard



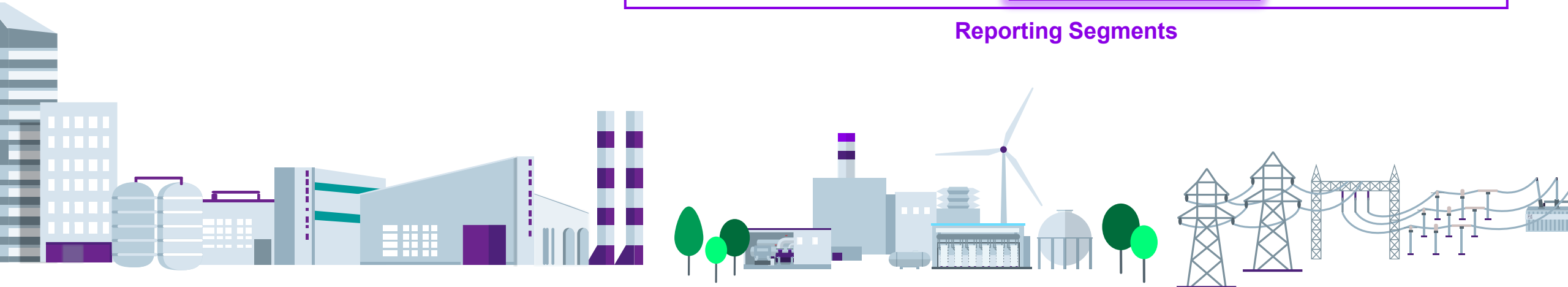
Transformation
of Industry

Vinod Philip



Siemens
Gamesa

Reporting Segments



Future-proof Industries

Helping energy-intensive sectors become more resilient



Advanced energy systems are required as rising costs push efficiency investments, energy security concerns boost supply diversification, processes switch to electricity and AI-driven power demand intensifies.

⇒ Visit website

Our offerings

- **Compressors:** Compressing, transporting and storing gases
- **Industrial steam turbines and generators:** Providing process steam and converting heat to electricity
- **Electrification, automation and digitalization solutions:** Electrifying industrial processes and maritime
- **Electrolyzers:** Providing clean hydrogen at scale to industrial processes
- **Service:** Repairs, field service | Modernization and upgrades | Digital services | Replacements
- **Digital:** Asset and plant management | Process safety | Cyber security | Energy and emission management

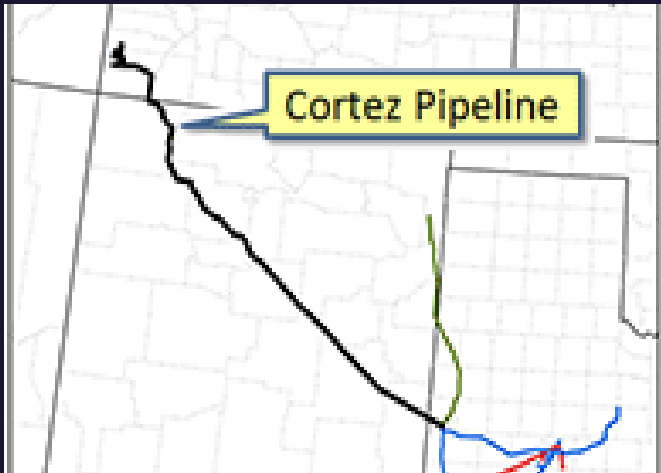
Market position

- #1** Ind. Steam Turbines & Generators
- #2** Compressors
- #2** Electrification, Automation, Digitalization
- #1** Electrolyzers

CO₂ Transport

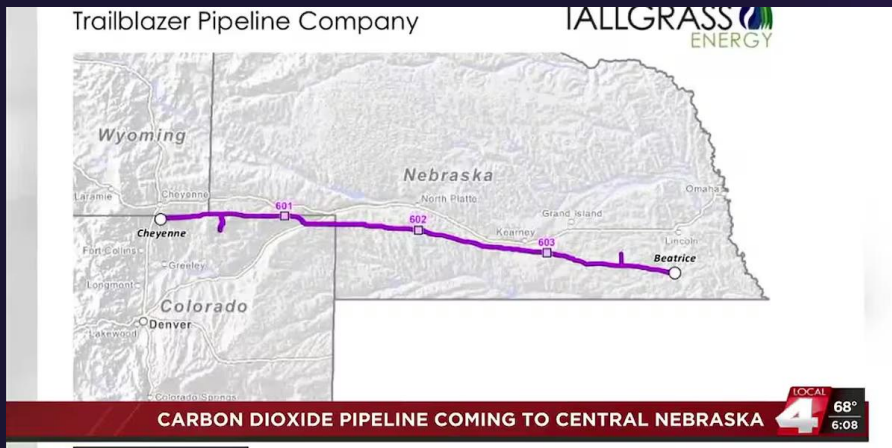


Pipeline Transportation



Pipeline: Cortez (Kinder Morgan)
Type: CO2 pipeline
Pressure: ~2,000 psi (operational pressure)
Diameter: 30-inch
Capacity: ~10 MMTPA
Length: 500 miles

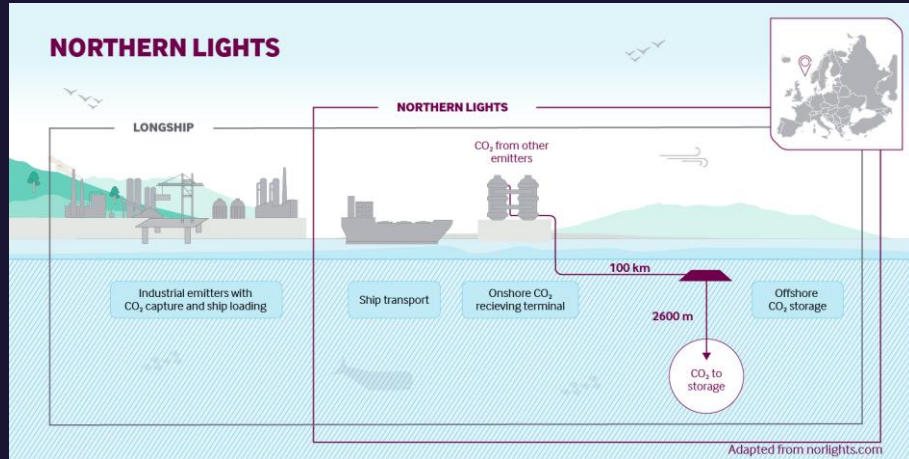
Supercritical



Pipeline: Trailblazer (Tallgrass Energy)
Type: Converted Natural Gas pipeline to CO2
Pressure: ~1,000 psi (operational pressure)
Diameter: 36-inch
Capacity: ~10 MMTPA
Length: 392 miles

Gas Phase

Liquid CO2 Transportation



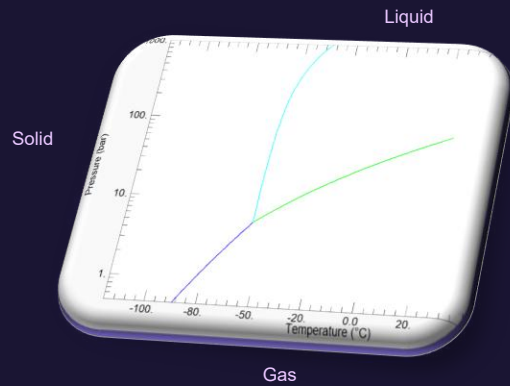
Project: Northern Lights
Type: Liquid (15-19 bar @ -30C)
Pressure: ~2,000 psi (operational pressure)
Sea Transport: 4 vessels, ~400 nautical miles
Capacity: 1.5 MMTPA
Storage: 12 vertical buffer tanks
Subsea: 62 mile pipeline to injection reservoir

Liquid



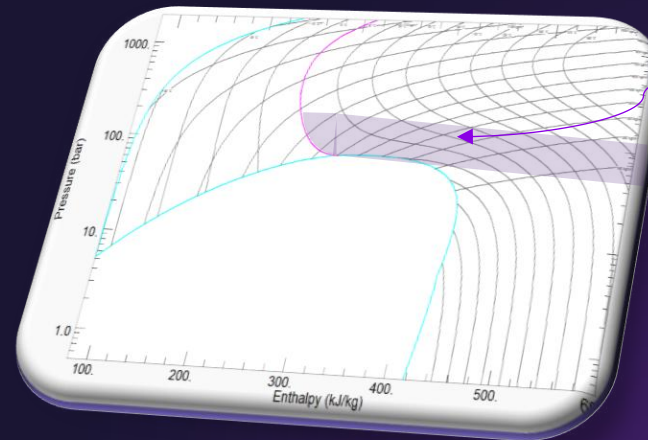
Physical Behavior of CO2

CO2 & CO2 Mixtures



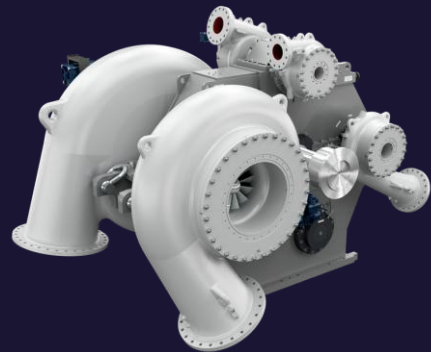
CO2 has phase change behavior at relatively low pressure and moderate temperature.

Above a certain temperature and pressure, the so-called critical point (for CO2 31.3°C and 73.8 bar), a fluid is in the supercritical phase, meaning it has properties of a liquid and a gas



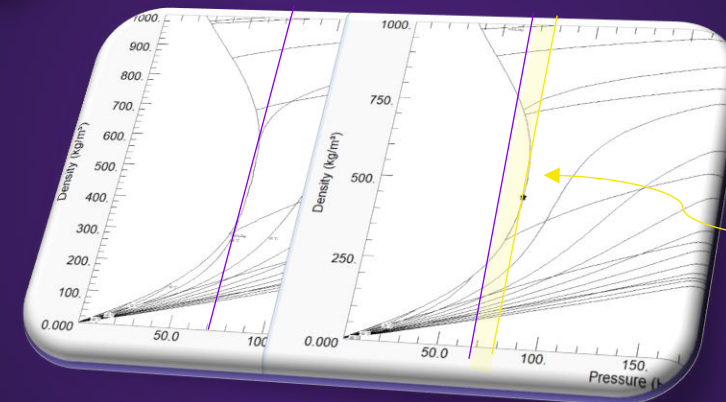
CO2 is transported most efficiently at high density and stable phase.

Supercritical CO2 has the density of a liquid (slightly lighter than a liquid, but much heavier than a gas) and the viscosity and compressibility of gas (slightly less than a gas, but much higher than a liquid)



Phase transitions shift to higher pressure with CO2 mixtures

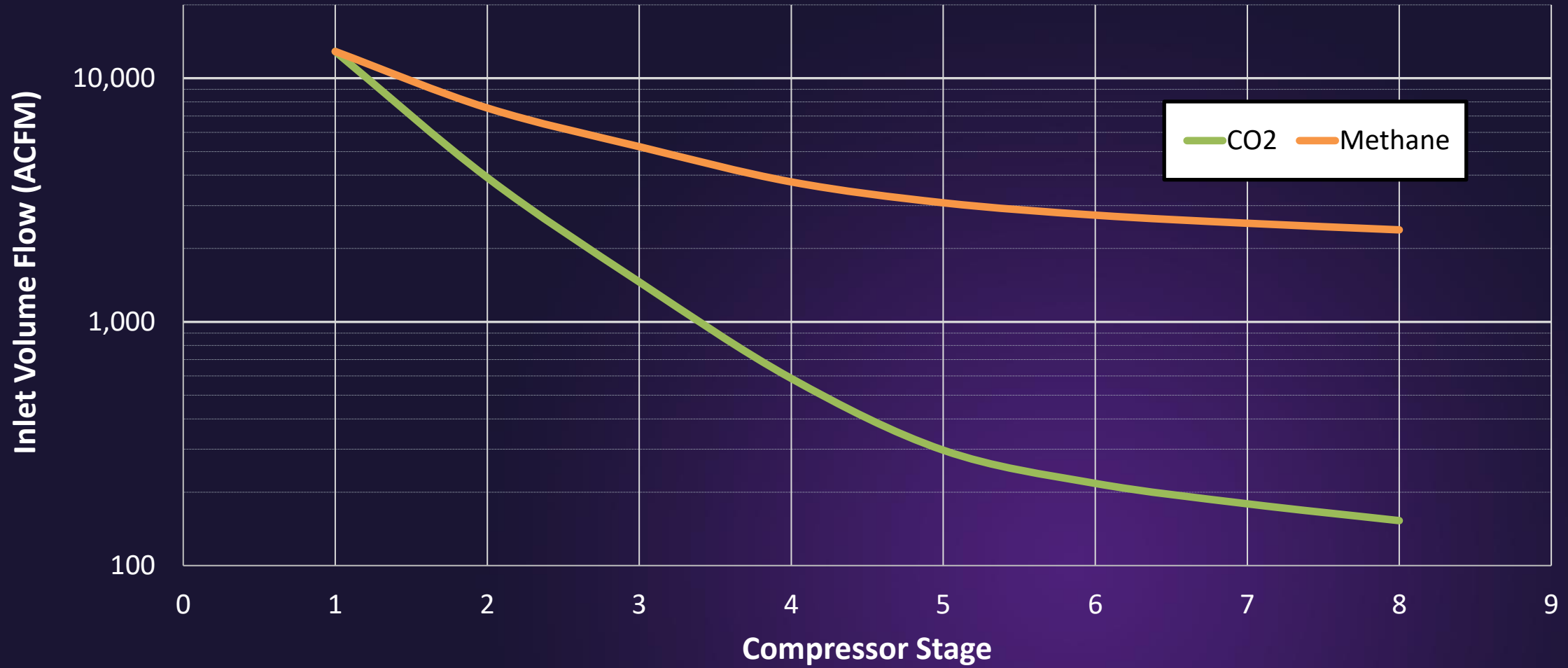
Most efficient state of CO2 for pipeline transport is as a sCO2 or dense-phase liquid allowing high density CO2 fluid without risk of phase change; this corresponds to a lower pressure drop along the pipeline.



CO2 Mixture

| Component | Mol% |
|-----------|------|
| CO2 | 97 |
| N2 | 2 |
| O2 | 0.5 |
| CH4 | 0.5 |

High mol weight of CO₂ leads to rapid Volume Reduction



Compression Portfolio



Compression Portfolio

Only OEM with full spectrum of critical compression technology for decarbonization

