

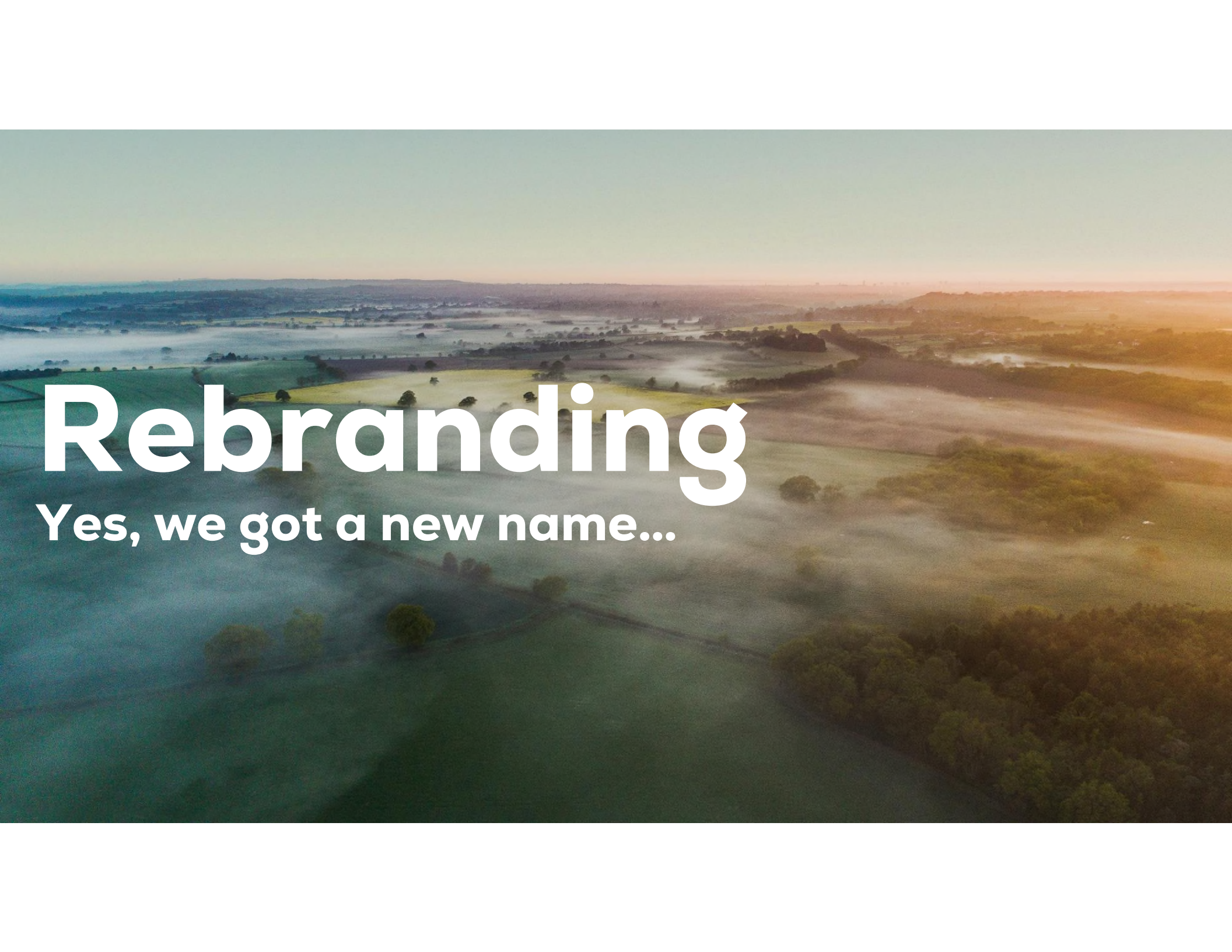
**Everllence**

**CO<sub>2</sub>  
Compressor  
Trends**

**2026 sCO<sub>2</sub> Symposium**

**Panel Session II – CO<sub>2</sub> Transport**





# Rebranding

Yes, we got a new name...

On June 4<sup>th</sup>,  
MAN Energy Solutions became

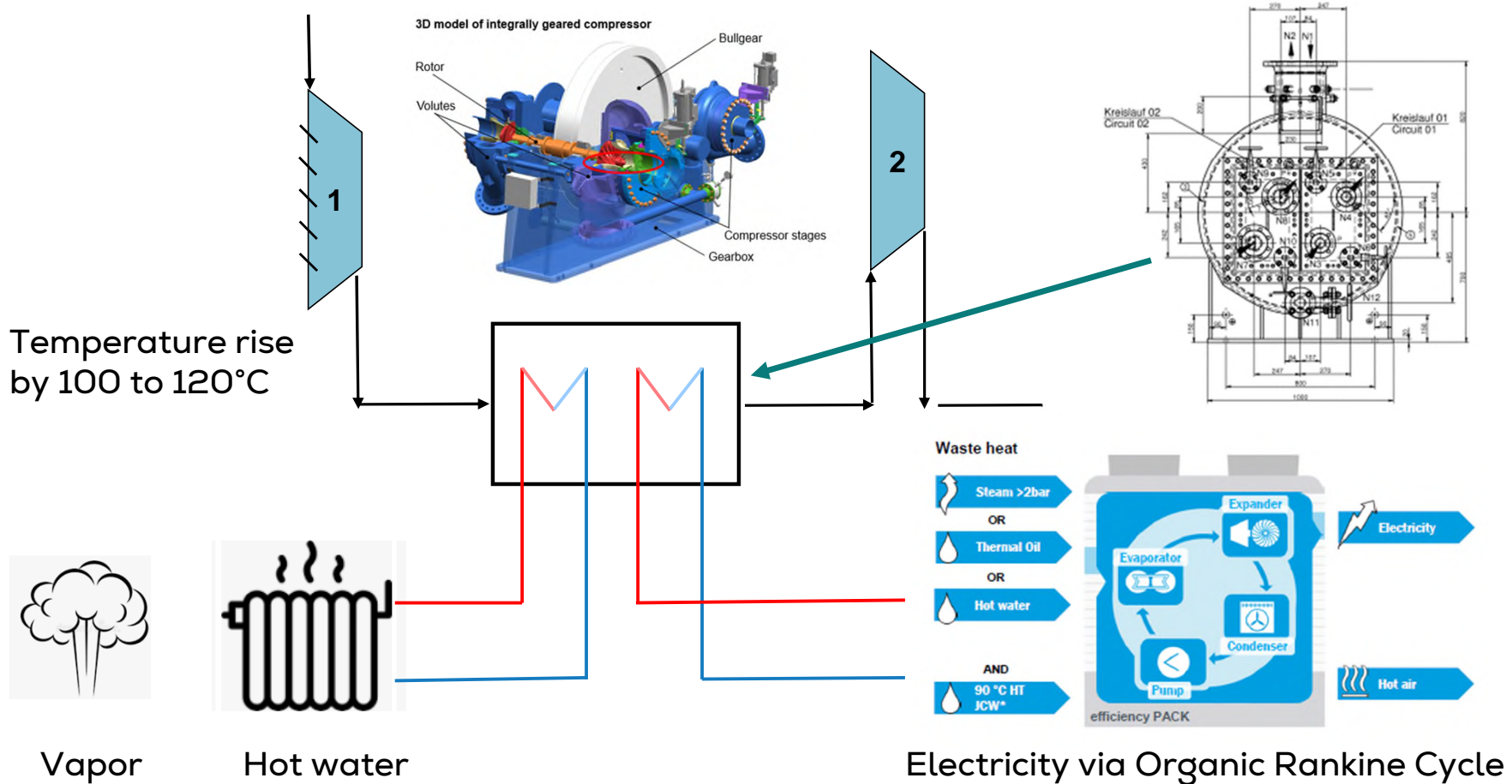
# Everllence

# CO<sub>2</sub> Compressor Trends

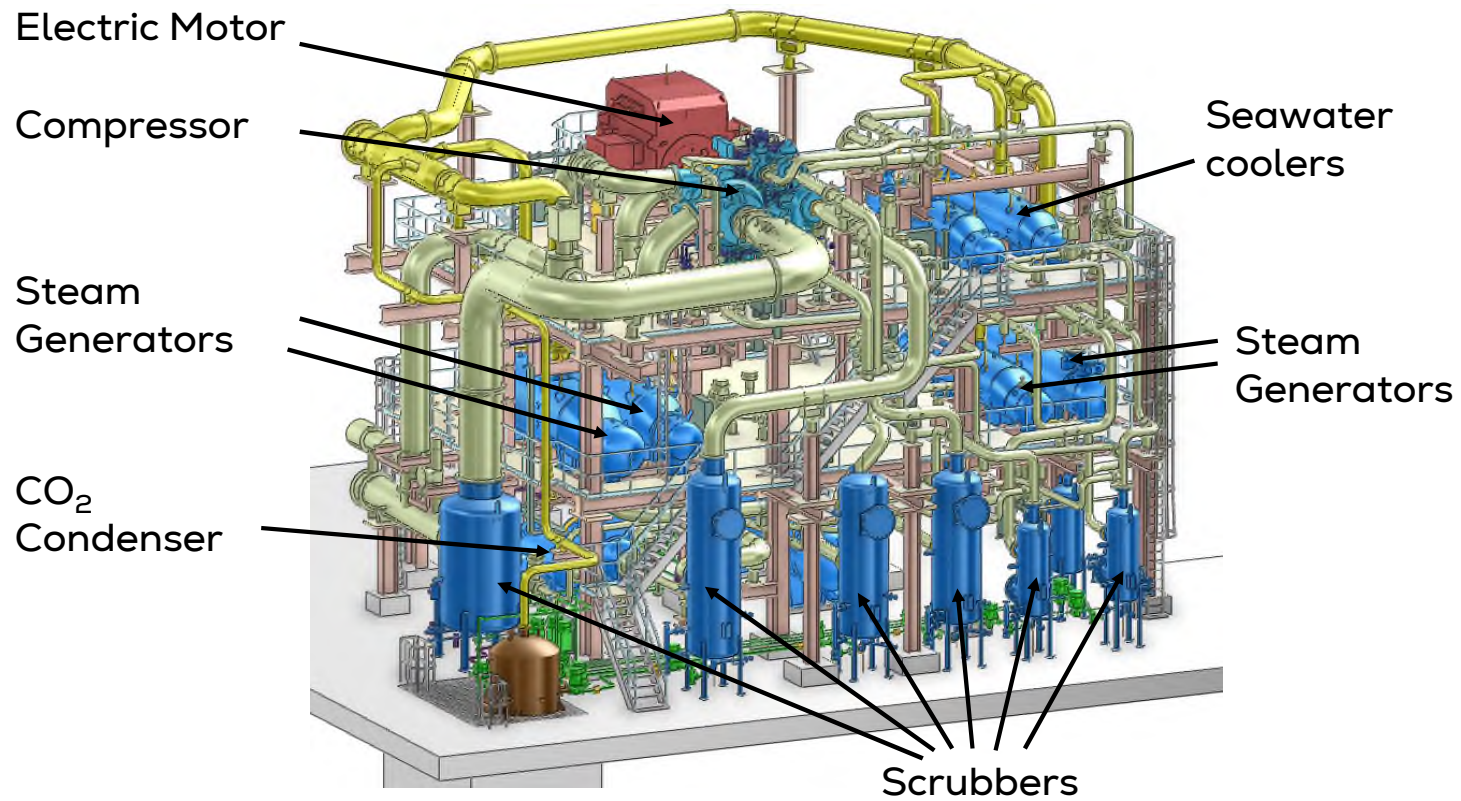
## energy recovery



# CO<sub>2</sub> Compressors – Heat Recovery Between Stages



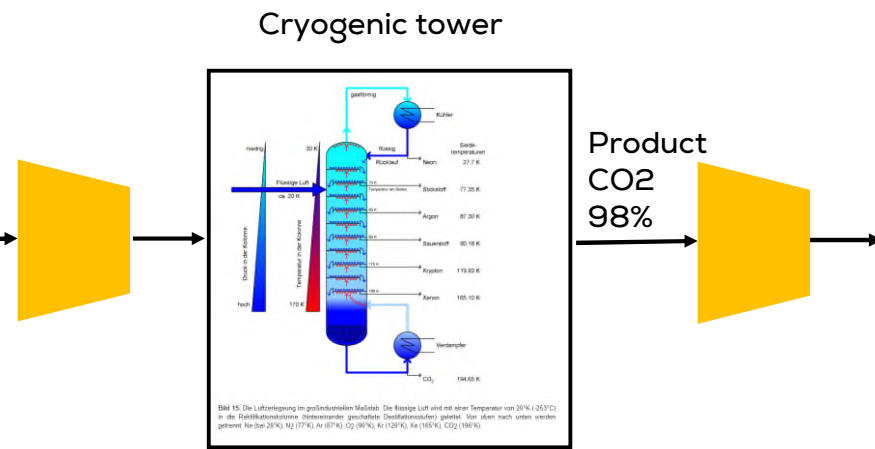
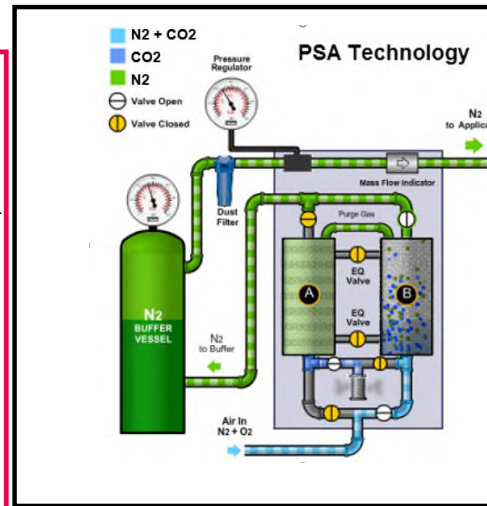
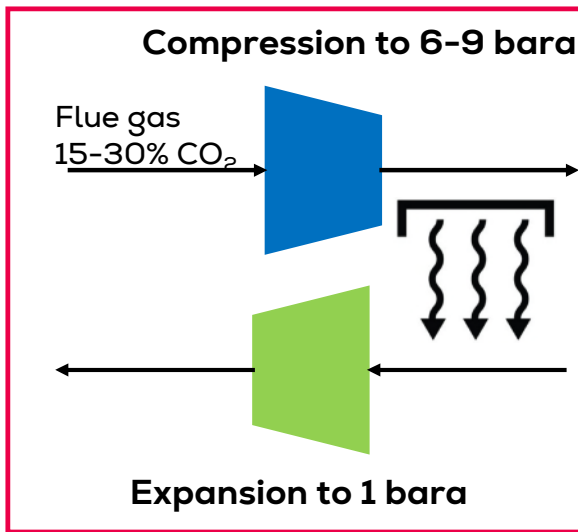
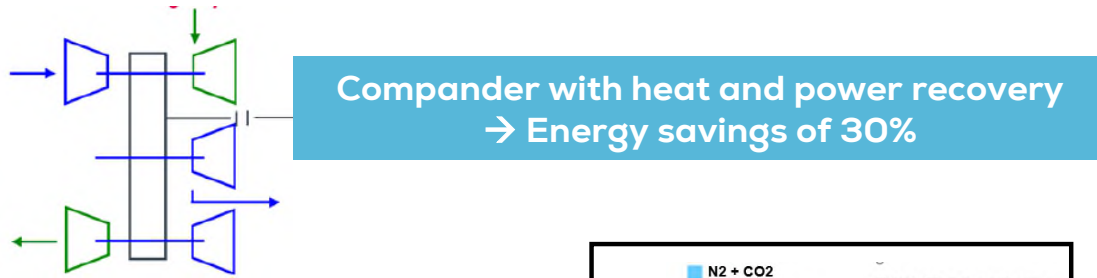
# CO<sub>2</sub> Compressor – with Heat Recovery





# CO<sub>2</sub> Compressor – Power & Heat Recovery

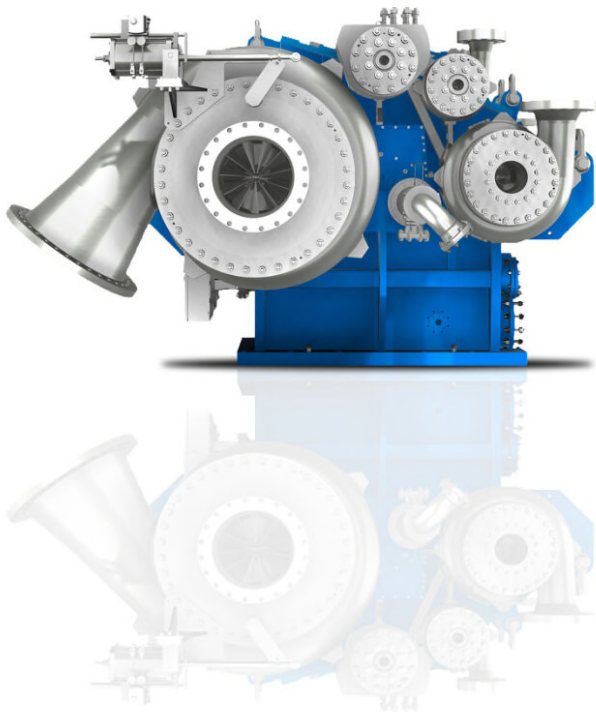
Pressure Swing Adsorption with Cryogenic Distillation



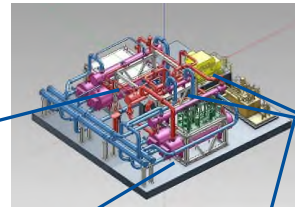
# **CO<sub>2</sub> Compressor** **modularization**

# CO<sub>2</sub> Compressor – typical package components

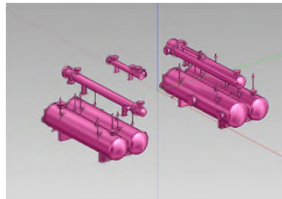
core machine



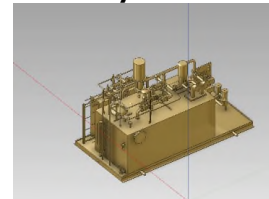
compressor package



cooler cluster



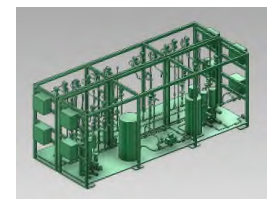
oil system



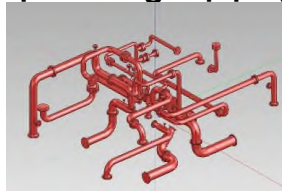
instrumentation control system



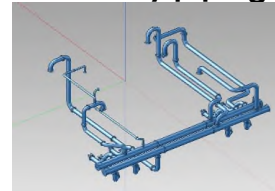
dry gas seal panel



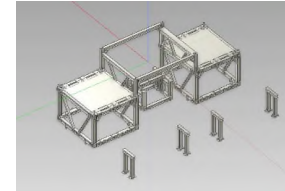
process gas piping



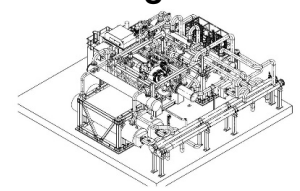
auxiliary piping



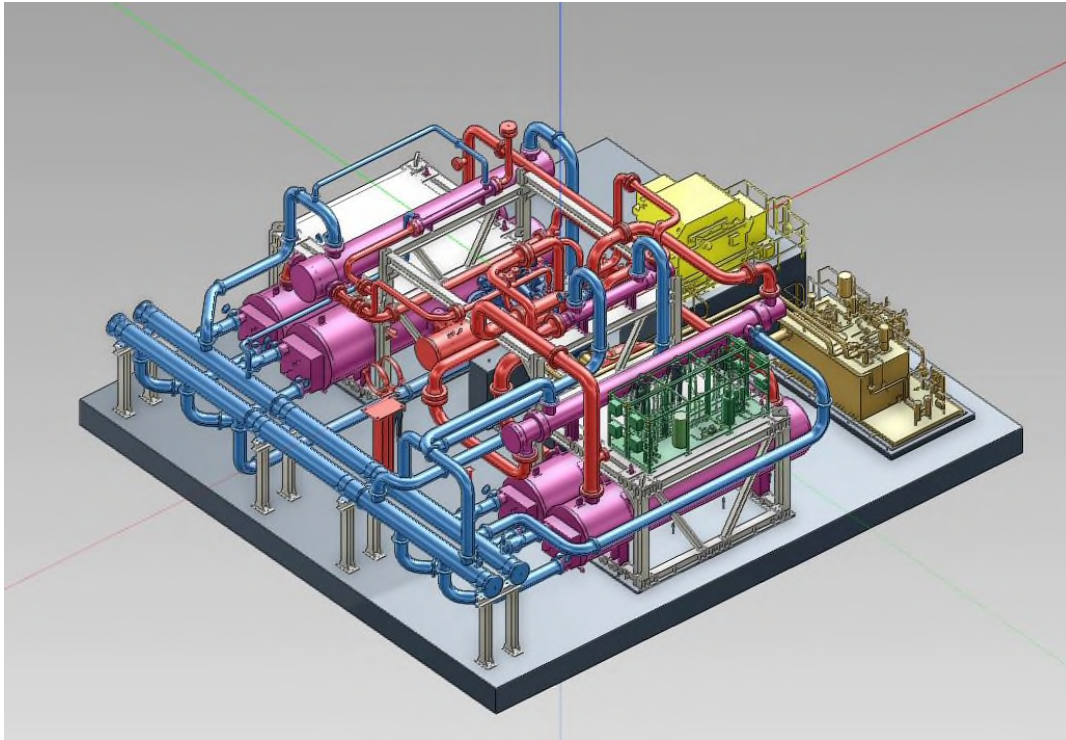
steel frame



arrangement



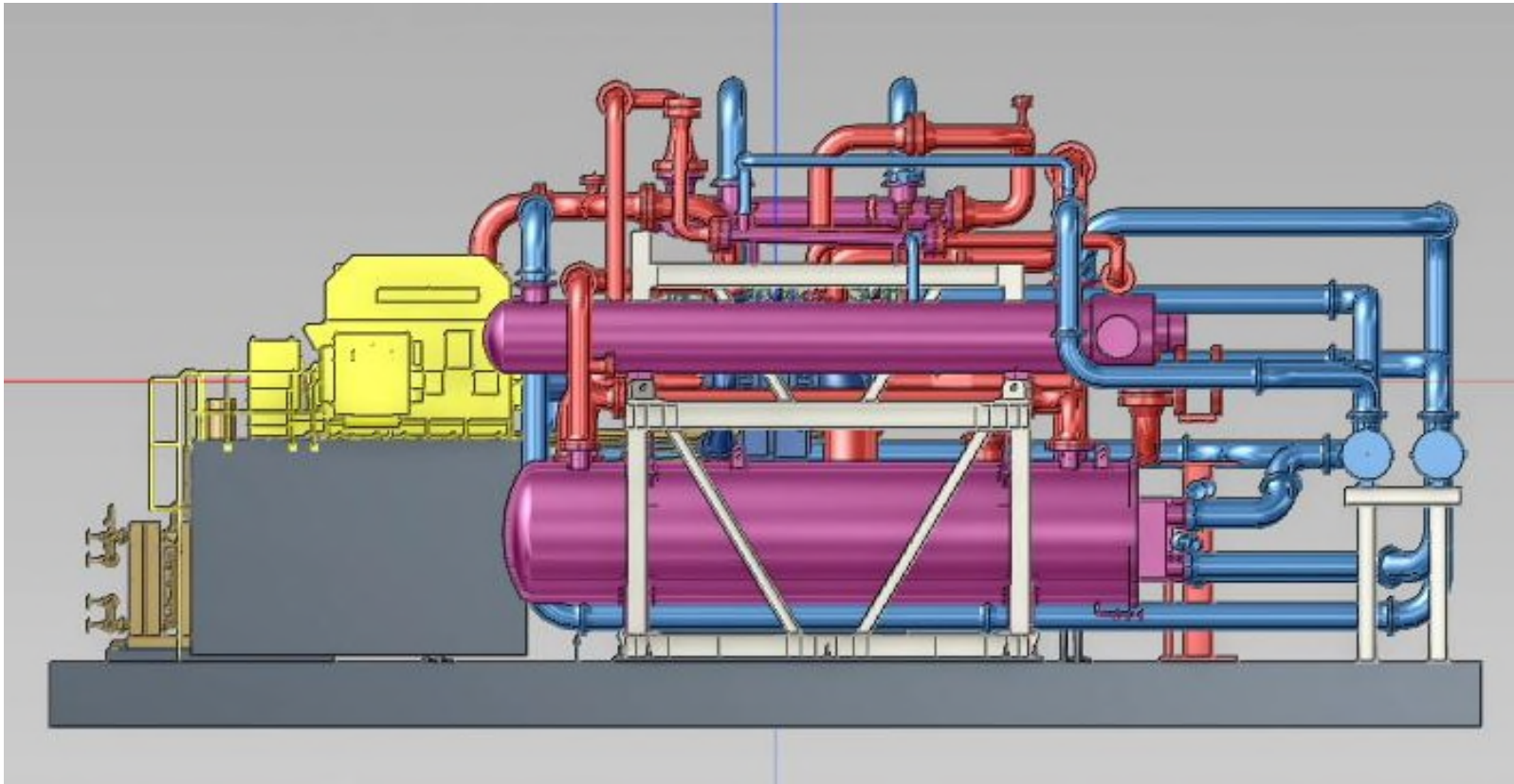
# CO<sub>2</sub> Compressor - Modular System



Example: modularized system

# CO<sub>2</sub> Compressor - Modular System

general design features



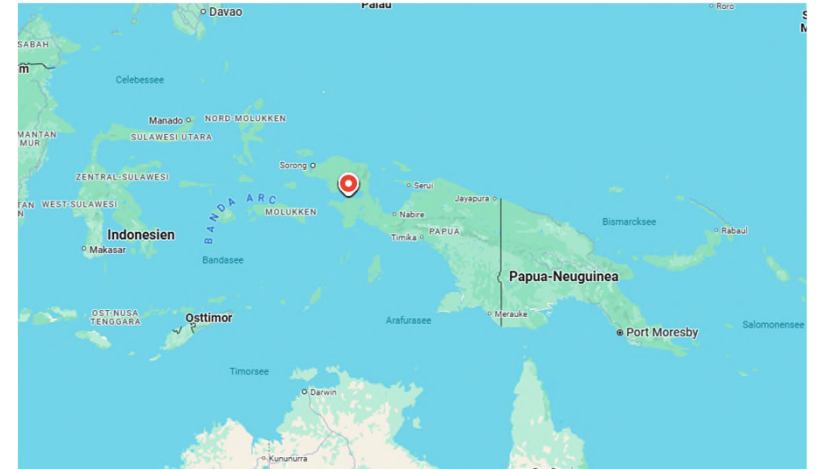
# CO2 Compressor Modularized Package



# CO<sub>2</sub> Compressor - Modular System

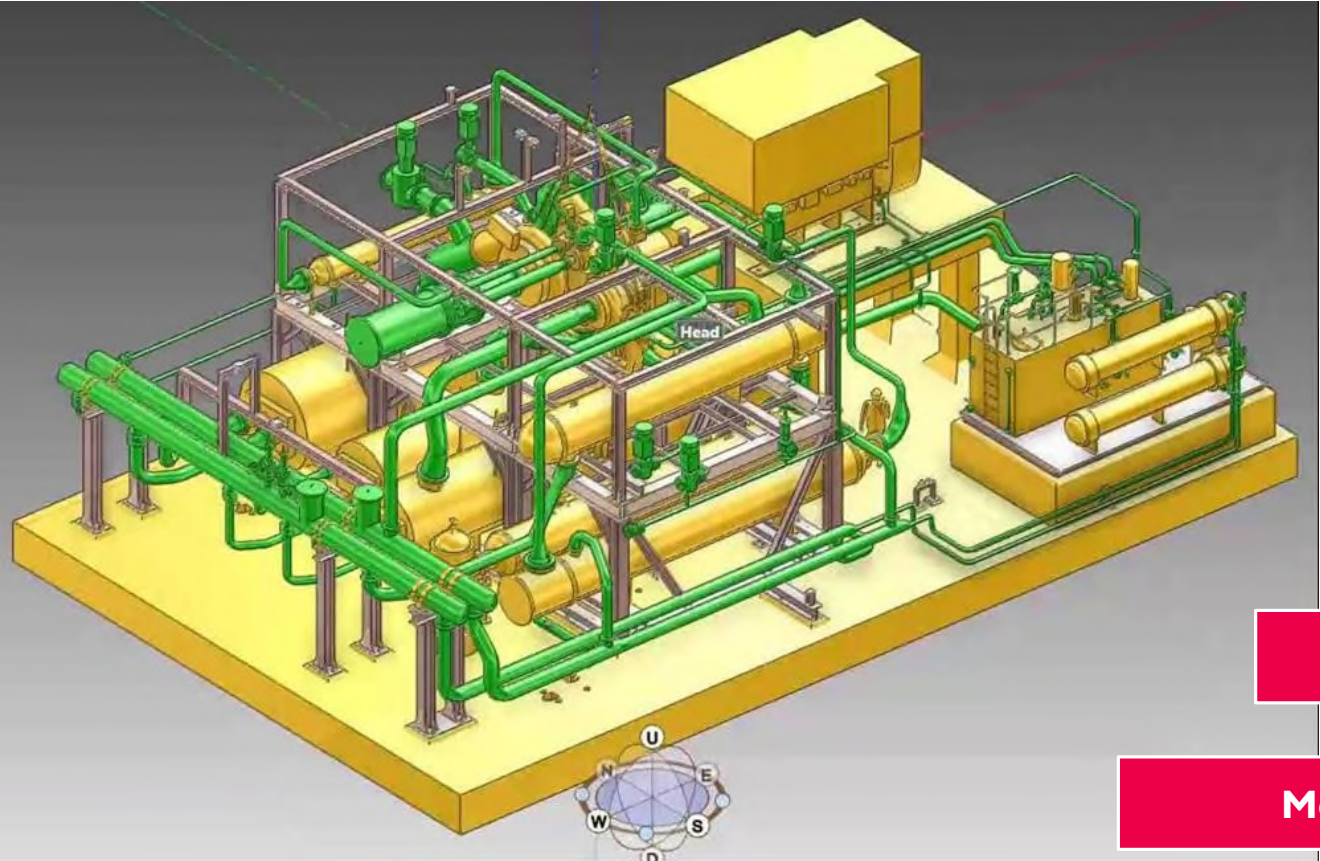


Modularized design



Type	RG 90-8
Gas	CO2 mix
Suction pressure	1.20 bar abs
Discharge pressure	161.2 bar abs
Flow rate	209,600 kg/h
Power	25,100 kW
Location	Indonesia

# Donaldsonville – Louisiana (USA)



**2 x 14.3 MW duty**

**From 1.15 to 167 bara**

**Modularized design**



**Thank you  
very much!**

**Kevin Kisor**  
Everllence USA Inc.  
Brookshire, Texas USA

Phone: +1 713 254-8175

E-Mail: [Kevin.Kisor@everllence.com](mailto:Kevin.Kisor@everllence.com)

**Everllence**

# Disclaimer

All data provided in this document is non-binding. This data serves informational purposes only and is especially not guaranteed in any way. Depending on the subsequent specific individual projects, the relevant data may be subject to changes and will be assessed and determined individually for each project.

This will depend on the particular characteristics of each individual project, especially specific site and operational conditions.